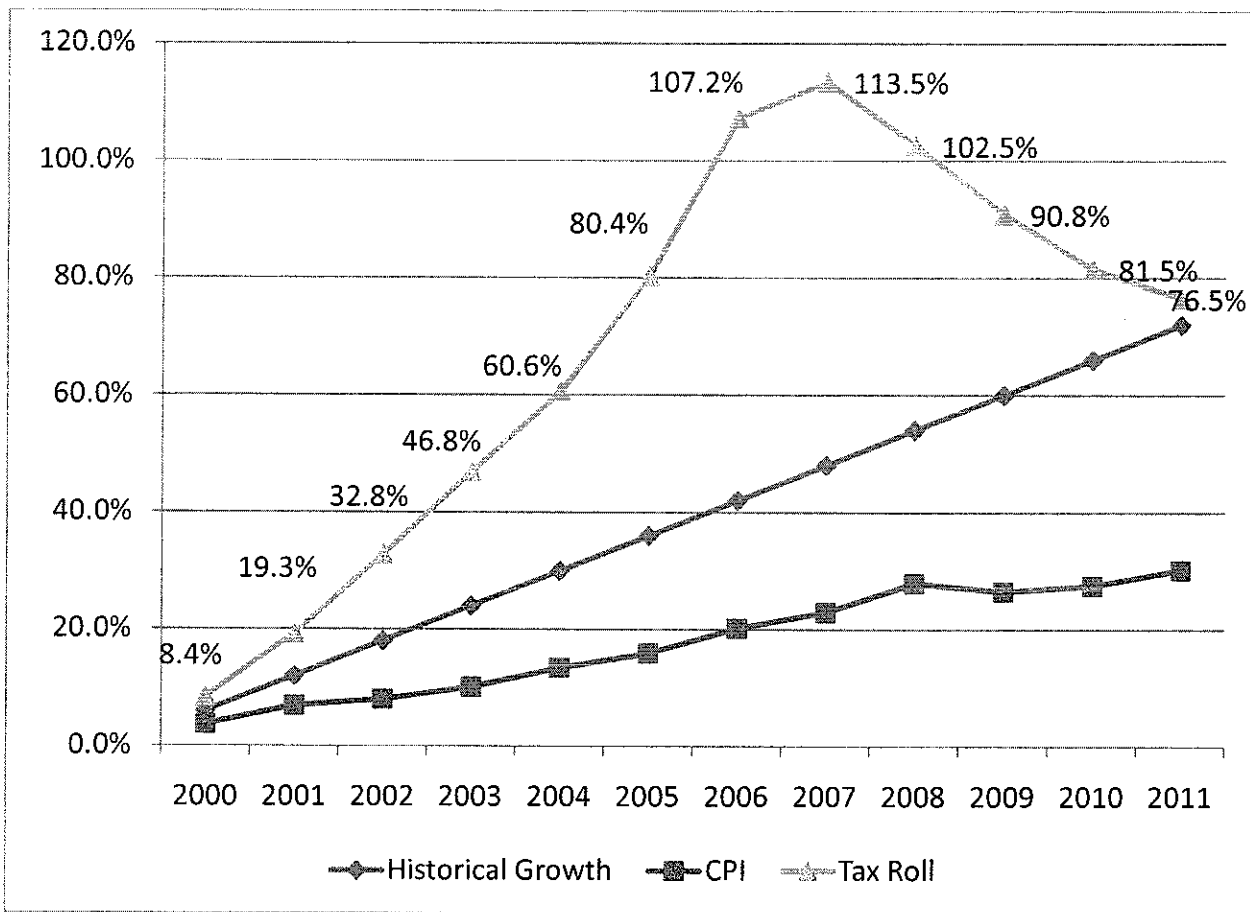


The School Board of Sarasota County, Florida Budget Workshop May 17, 2011

Executive Summary

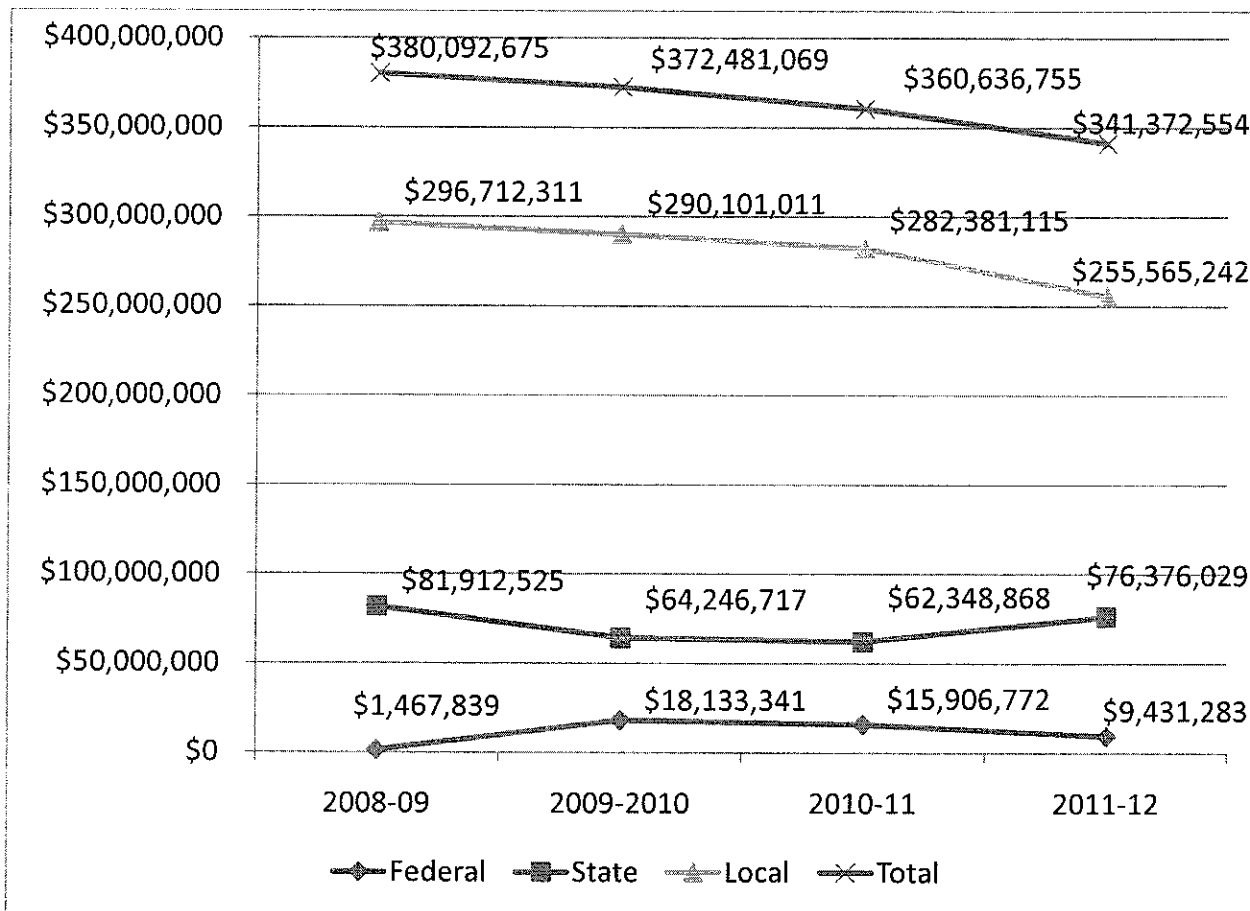
The Legislature ended the 2011 session at three o'clock in the morning on Saturday May 7, 2011. The reduction that was being anticipated was 6.11%, however after the session ended the reduction was 7.96%. The funding per student for 2011-2012 will be decreased by \$582.73 from the current year \$7,323.81 to \$6,741.08. In that the final day of the session became so turbulent we are still reviewing the conforming bill, retirement legislation, etc to determine what the bottom line is. At the June workshop the school and department budgets will be presented along with an update on the total appropriations and revenues of the operating fund for the 2011-12 and 2012-13 fiscal years. Also the preliminary tax roll will be released on June 1, 2011 which will help narrow the revenue estimate. At this workshop we are providing additional information that has been requested at prior workshops along with other information from the 2011 legislative session.

The graph below has been prepared to provide information on the tax roll for the years 2000 through what is projected for 2011. The tax roll growth during the years after 2000 is compared to what the average tax roll growth was during the years 1982 through 1997. In the graph the average tax roll growth from 1982 through 1997 was 6%.



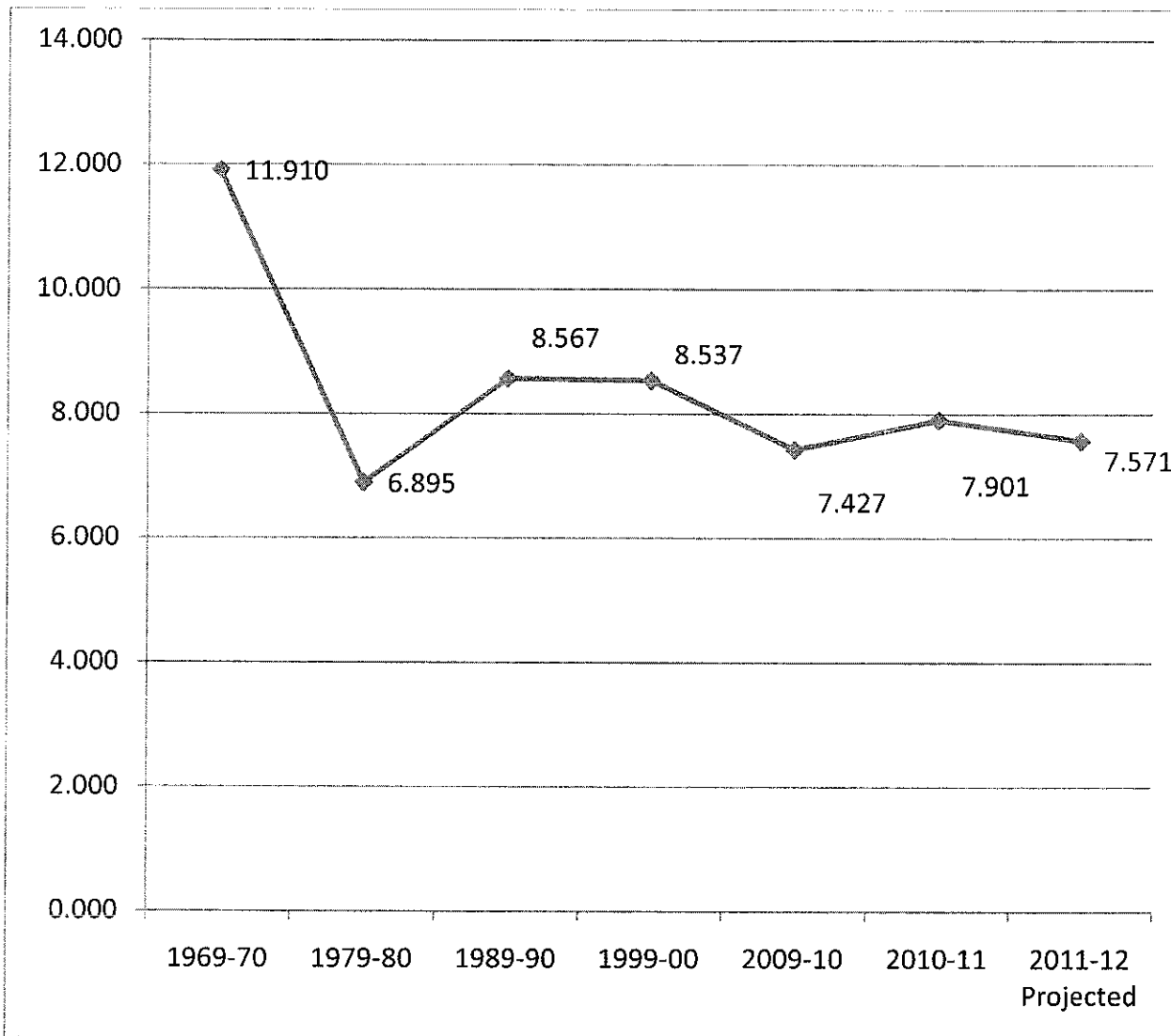
The School Board of Sarasota County, Florida Budget Workshop May 17, 2011

The 2011 Florida Legislative session eliminated approximately \$4 billion from the state budget. The impacts of the session on the revenues of the Operating Fund are detailed in attachment "A". In attachment "A" the Jobs Education Federal Funds have been included. This has been done to provide a full presentation of the total funds that are being used for operating purposes. The chart below highlights the major funding composition of the revenue budget for 2011-2012 as compared to previous years.



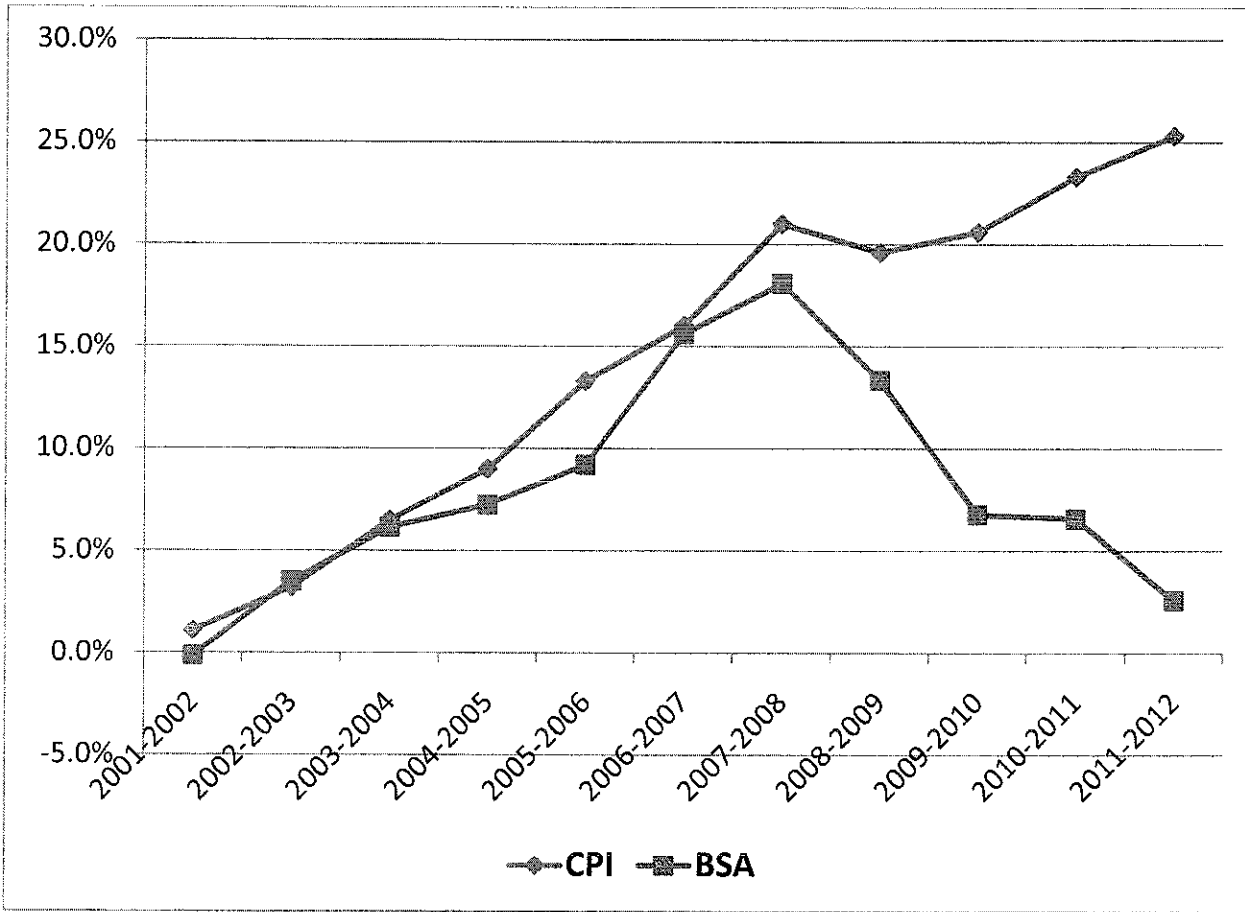
The School Board of Sarasota County, Florida Budget Workshop May 17, 2011

In "Attachment B" are the total millages levied by the School Board since 1969-70. In 1980-81 the Legislature enacted the Florida Education Finance Program in which the Legislature began mandating the amount that School Boards were allowed to levy. In the chart below are the total millage levies per every ten years and then the most recent levies of the school district.



The School Board of Sarasota County, Florida Budget Workshop May 17, 2011

The base student allocation that was approved during the 2011 Legislative session reduces the funding close to the 2001-2002 funding level. In the chart below a comparison has been presented that compares the consumer price index changes from 2001-2002 to the base student allocation changes from 2001-2002 through 2011-2012. The consumer price index increase for the 2011-2012 year has been forecasted to be 2%.



In the table below is the actual dollar amounts allocated through the Florida Education Finance Program for the years 2001-2002 through 2011-2012.

Year	Amount	Year	Amount
2001-2002	\$3,413	2007-2008	\$4,080
2002-2003	\$3,537	2008-2009	\$3,886
2003-2004	\$3,630	2009-2010	\$3,631
2004-2005	\$3,670	2010-2011	\$3,624
2005-2006	\$3,742	2011-2012	\$3,479
2006-2007	\$3,982		

The School Board of Sarasota County, Florida
General Fund Including Federal Stabilization Funds and Federal Jobs Fund
Comparative Statement of Revenues for the Fiscal Years
2008-2009 through 2011-2012

Based Upon Results of Operations Through April 30, 2011

Account Description	2008-2009 Actual	2009-2010 Actual	2010-2011 Original Budget	Projected 2010-2011 Actual	2011-2012 Tentative Budget
Federal Direct					
ROTC / PELL / SEOG	280,849	320,172	323,374	323,374	323,374
Federal Stabilization Funds (FEFP)		14,429,530	13,902,882	13,689,576	
Federal Jobs Fund					7,849,799
Federal Stabilization Funds (Dale Hickham Excelent Teaching Program)		748,136			
Federal Stabilization Funds (Work Force Development)		648,644	635,711	635,711	
Medicaid Reimbursement	1,186,990	1,986,859	1,163,250	1,258,111	1,258,111
Total Federal Direct	1,467,839	18,133,341	16,025,217	15,906,772	9,431,283
State					
Florida Ed. Finance Program	(1,069,901)	(12,271,860)	(13,293,281)	(15,919,428)	(845,561)
Florida Ed. Finance Program audit reduction from 2002-2003, 2005-2006, and 2008-2009.		(1,009,236)	(154,952)	(152,039)	
Governor Veto of Trust Funds for Education			(2,514,122)		
ESE Scholarships	(2,314,553)	(2,131,563)	(2,030,476)	(2,317,023)	(2,305,522)
Virtual Education Contibution					20,403
Work Force Development	10,308,452	9,483,390	9,246,543	9,246,543	9,637,132
Adults with Disabilities	714,177	670,438	649,171	649,171	515,161
Ed. Enhancement / Lottery	1,036,236	117,621	118,024	(219,168)	119,878
CO&DS Withheld for Admin	29,080	29,080	29,080	29,080	28,936
Classrooms for Kids	43,172,329	45,607,690	46,873,257	45,646,659	45,567,445
Declining Enrollment	1,794,462			296,418	44,012
Instructional Materials	3,948,013	3,375,179	3,390,091	3,281,929	3,136,049
State License Tax	272,899	242,120	266,332	252,673	251,419
Transportation	6,763,221	6,323,538	6,342,101	6,201,351	5,959,527
Safe Schools	1,185,096	1,156,795	1,165,922	1,160,861	1,116,435
Voluntary Pre K Program	162,232	20,560	20,560	20,560	20,458
Supplemental Academic Instruction	9,160,235	8,336,808	8,410,385	8,410,385	8,043,210
Reading Instruction	1,708,302	1,599,137	1,603,777	1,580,506	1,501,272
Teachers Lead Program	594,819	514,707	526,483	526,483	493,983
Florida School Recognition Program	3,034,552	2,017,058	2,017,058	2,794,147	2,256,081
Excellent Teaching Program	926,624		561,102	561,102	520,016
DJJ Supplemental Allocation	94,121	72,906	64,698	74,014	73,058
Performance Pay (Merit Award Program)	46,843	38,827	63,050	64,855	63,642
Other Miscellaneous State	345,285	173,522	159,788	159,788	158,995
Total State	81,912,525	64,246,717	63,514,592	62,348,868	76,376,029
Local					
District School Tax (Required Local Effort)	201,089,628	198,907,391	199,671,681	199,671,681	176,405,621
District School Tax (Discretionary)	26,941,790	35,602,471	32,098,521	32,098,521	30,523,110
Voted School Tax	54,099,981	47,596,887	42,465,456	42,912,461	40,766,838
Course Fees	1,294,060	1,887,917	1,925,676	2,001,819	2,001,819
Childcare Fees	1,183,669	1,216,676	1,241,009	1,431,238	1,431,238
Rent	242,251	234,832	287,832	290,212	290,212
Interest	763,804	945,203	945,203	907,395	907,395
Insurance Proceeds from the 1993-94 Early Out Program	2,928,071				
Food Service Indirect Cost	444,020	413,822	413,822	405,545	405,545
Federal Indirect Cost	836,670	834,900	834,900	615,066	461,300
Other Misc. Sources	2,560,368	2,460,912	2,497,016	2,372,165	2,372,165
Total Local	296,712,311	290,101,011	282,381,115	282,381,115	255,565,242
Total Revenues	380,092,675	372,481,068	361,920,924	360,636,754	341,372,555

The School Board of Sarasota County, Florida
Millage Rates

Fiscal Year	Required Local Effort	Discretionary	Debt Service	Capital	Voted	Supplemental	Total Millage
1969-70		10.690	1.220				11.910
1970-71		10.000	1.050				11.050
1971-72		10.750	1.050				11.800
1972-73		10.850	0.900				11.750
1973-74		10.850	0.900				11.750
1974-75		7.220	0.320				7.540
1975-76		8.000	0.480				8.480
1976-77		8.000	0.360				8.360
1977-78		8.000	0.196				8.196
1978-79		8.000	0.145				8.145
1979-80		6.750	0.145				6.895
1980-81	4.804	1.454	0.115		1.250		7.623
1981-82	4.512	1.130	0.089		0.851		6.582
1982-83	3.878	0.983	0.080	1.300			6.241
1983-84	4.400	1.100	0.075	1.334			6.909
1984-85	4.473	1.100	0.070	1.334			6.977
1985-86	4.286	1.319	0.061	1.500			7.166
1986-87	5.218	0.819	0.054	1.500			7.591
1987-88	5.117	0.819	0.050	1.500			7.486
1988-89	5.523	0.719	0.050	1.500			7.792
1989-90	5.808	0.719	0.040	2.000			8.567
1990-91	5.756	1.019	0.040	2.000			8.815
1991-92	6.329	1.019	0.037	2.000			9.385
1992-93	6.562	1.019	0.037	2.000			9.618
1993-94	6.428	0.510		2.000	1.018		9.956
1994-95	5.911	0.510		2.000		0.116	8.537
1995-96	6.847	0.510		2.000		0.106	9.463
1996-97	6.483	0.510		2.000		0.101	9.094
1997-98	6.347	0.510		2.000		0.090	8.947
1998-99	6.631	0.510		2.000		0.088	9.229
1999-00	5.945	0.510		2.000		0.082	8.537
2000-01	5.957	0.510		2.000		0.077	8.544
2001-02	5.906	0.510		2.000		0.072	8.488
2002-03	5.710	0.510		2.000	1.000	0.067	9.287
2003-04	5.223	0.510		2.000	1.000	0.060	8.793
2004-05	4.801	0.510		2.000	1.000	0.055	8.366
2005-06	4.254	0.510		2.000	1.000	0.097	7.861
2006-07	3.623	0.510		2.000	1.000	0.077	7.210
2007-08	3.541	0.510		2.000	1.000	0.072	7.123
2008-09	3.717	0.498		1.750	1.000	0.080	7.045
2009-10	4.179	0.748		1.500	1.000		7.427
2010-11	4.653	0.748		1.500	1.000		7.901
Preliminary 2011-12	4.323	0.748		1.500	1.000		7.571